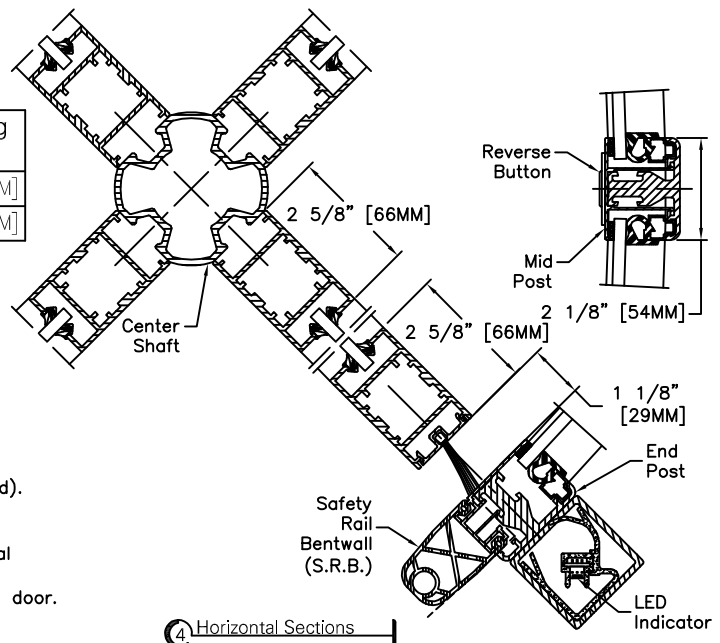


Standard Door Sizes

Nominal Diameter	Inside Diameter "A"	Outside Net Frame "B"	Throat Opening "C"
6' 6"	6'-6" [1980MM]	6'-9" [2055MM]	4'-3 3/4" [1315MM]
7' 0"	7'-0" [2135MM]	10'-0" [2210MM]	4'-8" [1420MM]



Options:

- Extended canopy heights (contact factory).
- Sterovision (Anti-piggybacking).

Installation:

Door installs on finish floor (no recess, rings, or cutouts required).
 Floor must be dead level.
 Power supply from above.
 Door ties to adjacent storefront or curtain-wall system for lateral stability.
 Adjacent construction not to bear down on any part of revolving door.